

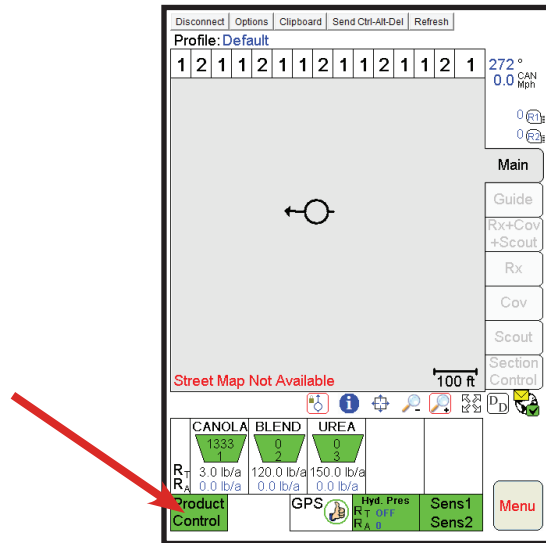
# SPEED INPUT TO THE VIPER MONITOR

The Viper requires a speed input so it can dispense product at the desired rate regardless of speed. A Raven Phoenix 10 GPS receiver is supplied from SeedMaster with all product tank equipped units sold. It is to be mounted on the tractor roof and connected via the included cable to the rear of the in-cab switchbox.

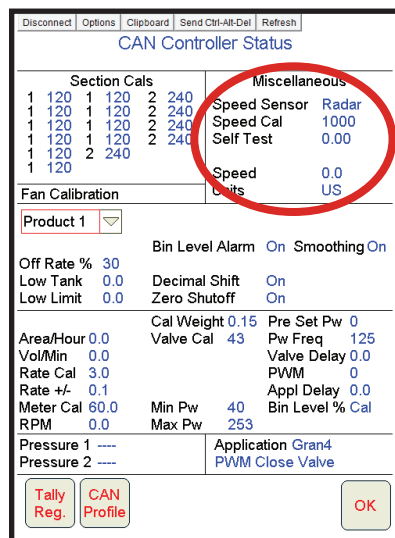
The Viper also requires a GPS signal to run Automatic Zone Command. Unfortunately, the Phoenix 10 is not capable of supplying a signal for this function. It is the owner's responsibility to connect a 3<sup>rd</sup> party GPS receiver to the connection on the in-cab harness labelled "GPS Receiver – DGPS".

The customer has the ability to use the Phoenix 10 or the 3<sup>rd</sup> party GPS receiver as a speed input to the Raven Viper monitor (Viper software version 3.8.0.43 or higher). This will provide an additional safeguard to the farmer to ensure that he is capable of continuing to seed, regardless of GPS failure. Please see below for instructions on how to switch from one speed input to another within the Viper settings.

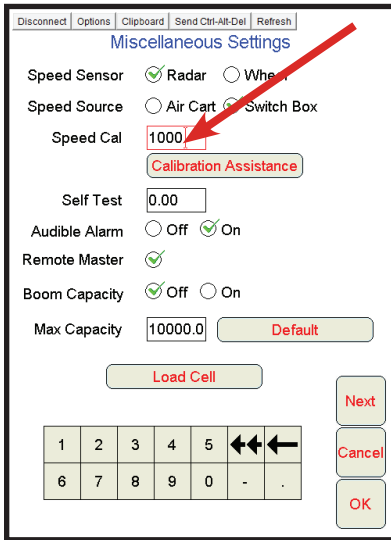
1. From the main work screen, press "Product Control"



2. Press within the "Miscellaneous" area



- Change the "Speed Cal" number to **785** to use the Phoenix 10 for speed input. Change the "Speed Cal" number to **1000** to use the 3<sup>rd</sup> party GPS for speed input.



- After changing the "Speed Cal" number, move the tractor and ensure a speed is registering on the Viper homepage.

