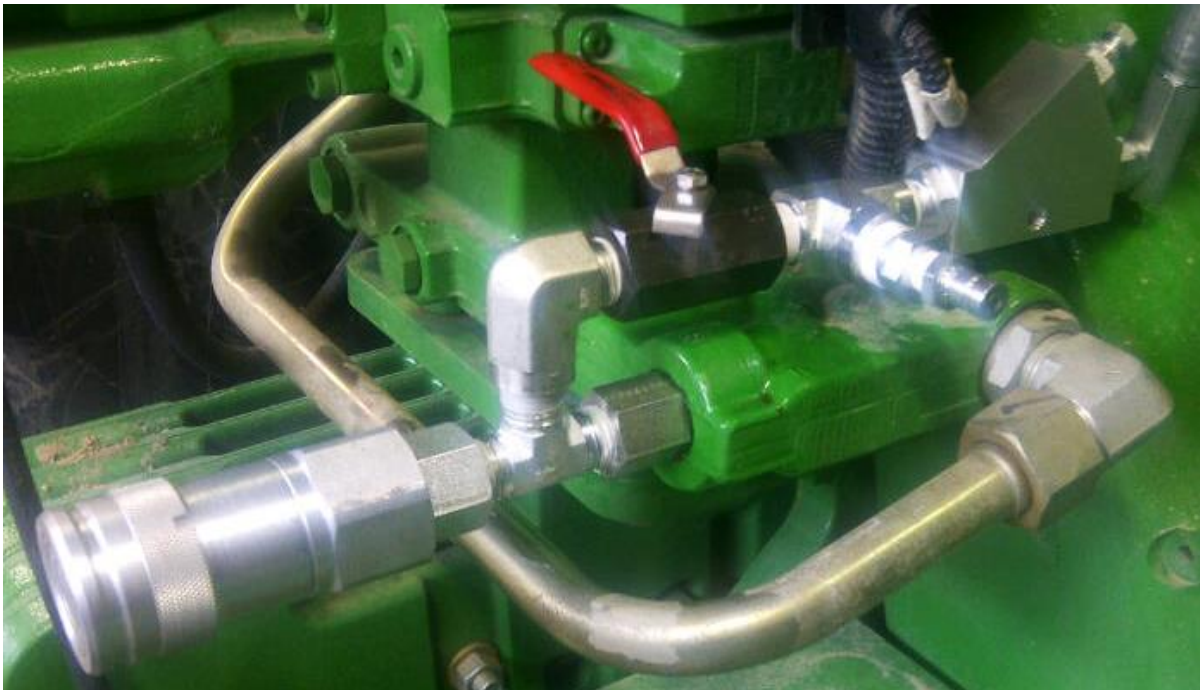


JOHN DEERE R-SERIES / SEEDMASTER SM15 BLOCK

SeedMaster is committed to providing the best possible solutions for a low pressure return line. We have worked with our SeedMaster Certified Dealers and they have helped identify a low pressure return oil kit for John Deere R-series tractors. Below you will find details and pictures for the low pressure return oil kit. Please contact your SeedMaster Certified John Deere Dealer.

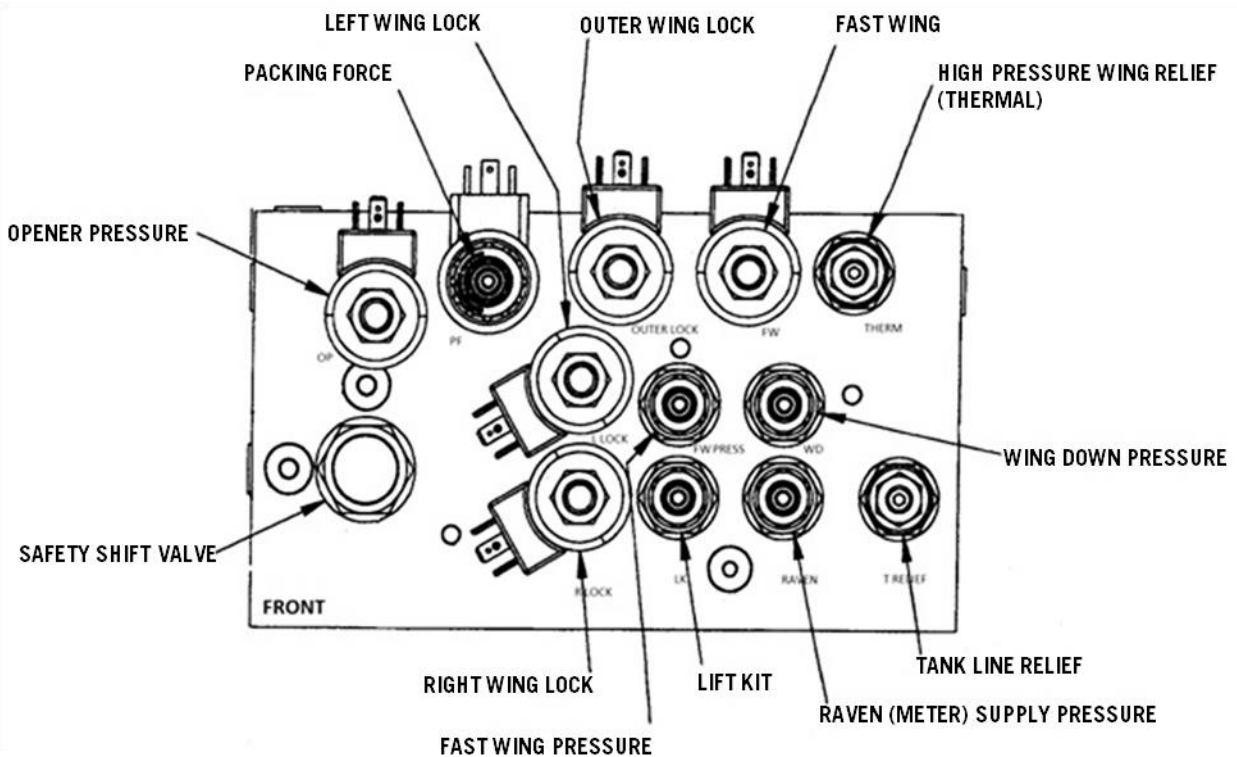
The low pressure return line kit consists of the coupler, shut off valve, adjustable pressure relief valve, and hoses. The kit is plumbed into the return port on the bottom of the SCV stack. In most situations, the return oil from the rear implement will return here. In certain situations, there will be more return oil than the system can handle. The adjustable relief valve is set at 100 psi to prevent too much back pressure in the system. When it opens it will return back to the hydraulic oil reservoir. Also included in the kit is a shut off valve that is to be closed when the air drill is disconnected. This will prevent oil from being circulated back to the reservoir. The return oil will return to the reservoir where the factory installed case drain is located (marked MSD). Route the hoses back to the reservoir and "tee" both the case drains in there to prevent too much back pressure in the system. The low pressure return kit will be installed into the free port at the top of the reservoir. NOTE: Use only 1/2" hoses and fittings to prevent back pressure.



We thank you for maintaining your SeedMaster equipment. If you have any questions, please contact your [SeedMaster Certified Dealer](#) directly.

JOHN DEERE R-SERIES / SEEDMASTER SM15 BLOCK

SeedMaster would like to inform you of a service notice for our new style hydraulic block for all SM15 models. SeedMaster has introduced the new block to simplify the hydraulic system. **Figure #1** is a breakdown of the hydraulic block.



SM15 models running with R-series John Deere tractors will need to have the safety shift valve removed and replaced with a valve blank (Seedmaster Part #258366). The valve replacement can be ordered through your SeedMaster Certified Dealer.

Note: This replacement valve removes the safety shift valve, which is in place as a safety feature to shut oil flow off if 80 psi back pressure is sensed on the low pressure return lines.

We thank you for maintaining your SeedMaster equipment. If you have any questions, please contact your SeedMaster Certified Dealer directly.